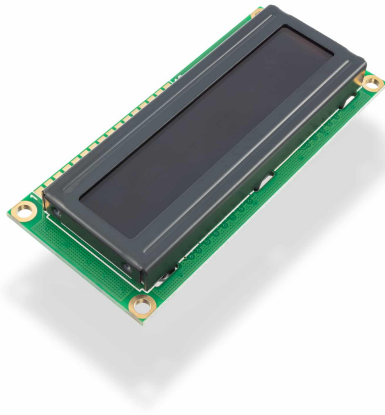




## LCD DISPLAY 16X2 WHITE/BLACK



**Weight** 37.5 g

---

### DESCRIPTION

LCD screen with HD44780 controller enables showing text, symbols, value or anything else that comes from Croduino/Arduino. It is capable of showing 16 symbols in two lines and therefore can be used in many projects that need to send clearly visible and legible output information.

- **The color of symbols:** white
- **Backlight:** black
- **Dimensions:** 80 x 36 x 12 mm
- **Screen dimensions:** 64.5 x 16 mm
- **Voltage:** 5V
- Comes with 16-pin flat, non-soldered male header.

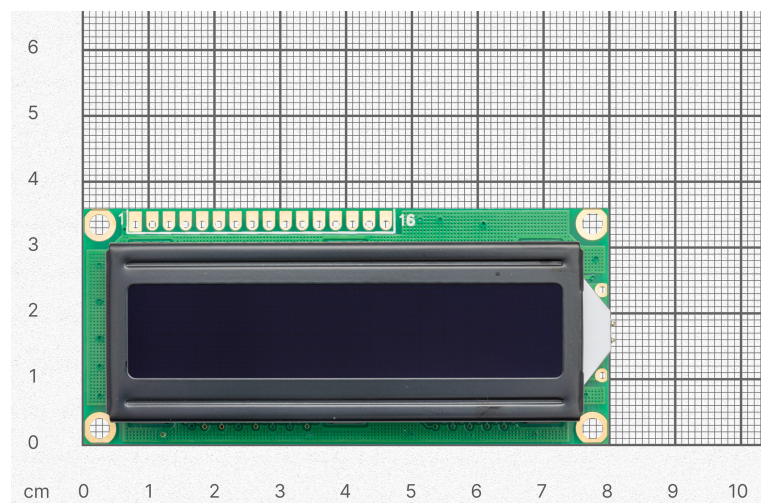
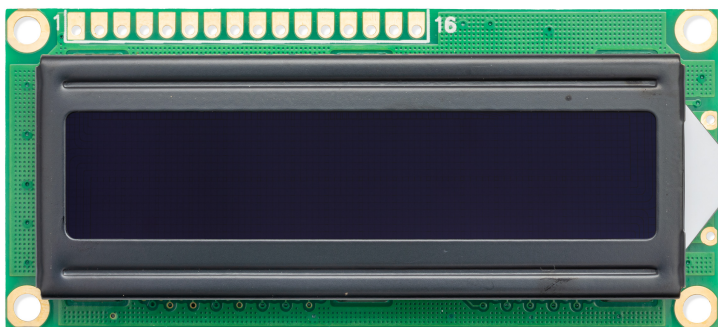
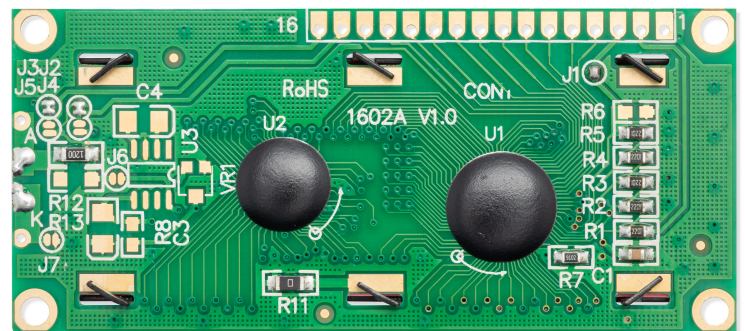
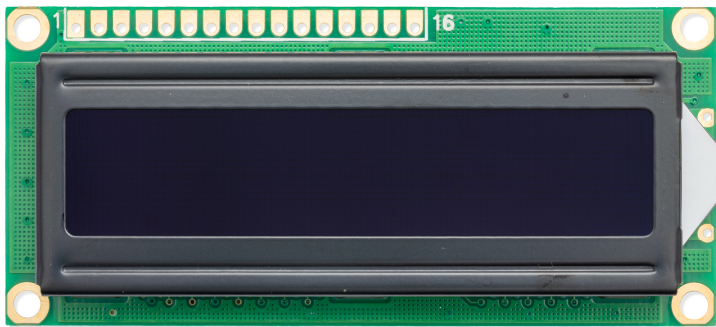
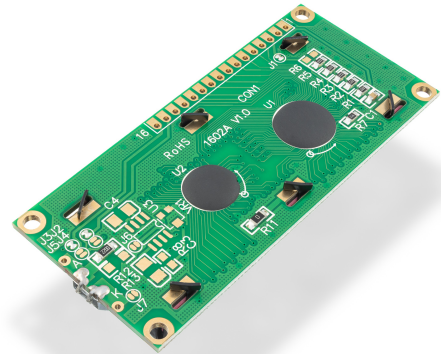
### FEATURES

- The color of symbols: white
- Backlight: black
- Voltage: 5V
- Comes with 16-pin flat, non-soldered male header.
- Screen dimensions: 64.5 x 16 mm / 2.5" x 0.6"
- Dimensions: 80 x 36 x 12 mm / 3.1" x 1.4" x 0.5"

### USEFUL LINKS

- [Datasheet](#)

## A 128x64 pixel monochrome LCD module. It features a green printed circuit board (PCB) with gold-plated pins along the bottom edge. The LCD screen is black and rectangular, mounted on the PCB. The module is shown at an angle, highlighting its slim profile.



## Weight

37.5 g

